



SCALE RAILS of Southwest Florida

Newsletter

August, 2007

Volume 8 Issue 7

OFFICERS

Chairman: Dennis Little

President: Peter Gross

Vice President: Jim Edmier

Secretary: Jim Morse

Treasurer: Stan Seeds, MMR

Calendar

Sept 8, Monthly meeting, 1:30pm

Oct 13, Monthly meeting, 1:30pm

Oct 19, SSR Board of Directors meeting,
Scale Rails Depot, 3:30 pm

Oct 20, Western Div. Meet, 8:30am, North
Shore Alliance Church and Scale Rails Depot

Nov 10, Monthly Meeting, 1:30pm

HO Layout Status

LA Division 1

Stan has been busy trying to finish up the San Bernardino Depot. He is now adding the Harvey House and associated facilities. Then there will be very little left to finish off this magnificent building.



Jim Morse has installed the crossover and tortoise switch machines in Summit. Peter modified the control panel to include the crossover. Lee then solved the wiring problems resulting from all these changes.

Peter is busy adding details to the SW Portland Cement plant in Victorville so it will be finished and ready for judging when the Western Division Meet is held here in October.

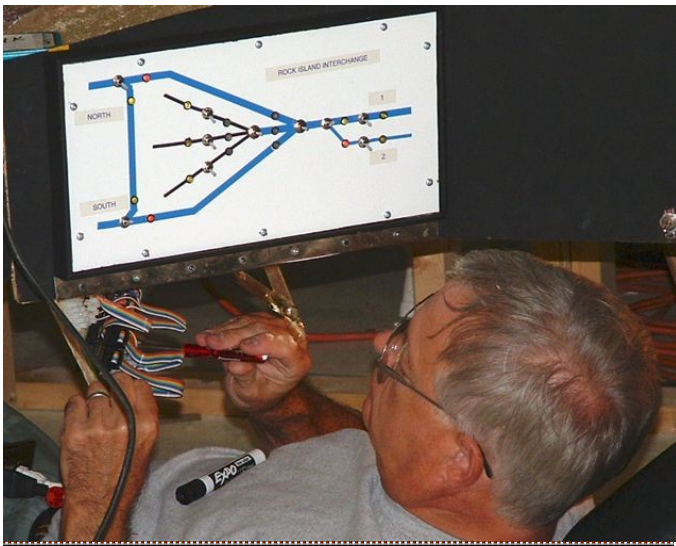
Joint Line

Ben and Jim Morse have finished the installation of track, switch machines, and track wiring to the control panel for the Rocking Island Junction. Jim also opened up the opening area to allow for more effective

scenicing of the Junction area. Lee finished the wiring of the controls for the two three-way turnouts at the Junction. This first picture shows the two three ways and a locomotive in the "hole" waiting to come out into Colorado Springs.



This second picture shows just what a cushy job Lee has, wiring up the logic boards for the three-way turnout controls.



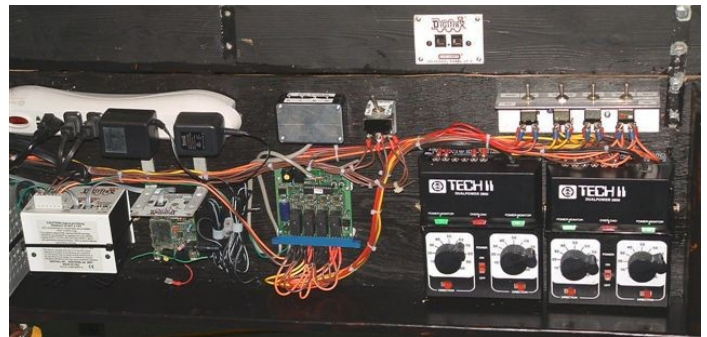
NTRAK Layout Status

Dwight, Dan and Darrin (the tree D's???) have been busy this summer on the NTrak modules. One major piece of work was to add a significant Yard to the layout, covering two modules. When finished this will allow for trains to enter and leave the yard from either end and provide for significant staging

room. Progress is currently held up waiting for two turnouts and for some white wire to finish the drops.



Lee has re-configured the power controls and done some rewiring so that now they can run DC or DCC on any track, with the throw of a toggle switch on the panel. This panel can be removed for travel fairly easily.



Dan has been busy finishing up the 'sky boards' and making trees. He spent about one month in MN, harvesting more tree materials so we can expect lots more trees soon.

Darrin has been working on scenicing the modules that form the end units at one end.

Scale Rails Meeting Minutes July 15, 2007

Meeting called to order at 1:30 pm by President Peter Gross.

Members Present: Peter Gross, Stan Seeds, GMMR, Steve Gdovin, Alex Halberda, Ryan Hanaway, George Nink, Dwight Sedgwick, Luther Ward, Ben Curll, Don Sprotbery, Jim Beliveau, Bob Veefkind, Rich and Diane Korf, and Ray Welliver.

June Minutes

Minutes from the June, 2007 meeting were printed in the June, 2007 newsletter. Motion by Steve Gdovin, seconded by Jim Beliveau to approve the minutes. Motion approved.

Treasurer's Report

Stan Seeds, GMMR, reported that we have \$5643.80 in checking and \$5027.38 in savings. Out net worth is now \$110,432 and the mortgage is down to \$36,245. YTD income is \$7702 versus a budget of \$6356 and expenses are \$5954 versus a budget of \$5727.

Correspondence

1. Our application for 100% NMRA membership has been sent in. We received an insurance application so we have met our requirements.

2. Forrest Brubaker has a "Harry Potter" layout for sale in Cape Coral. Everything needed for the layout is there. Price is negotiable. Call 549-6505 if you are interested.

Layout Status

LA Division 1: Stan reported that Oren Stephans is working on the roundhouse, George Mocko is continuing work on the diesel house, Ryan Hannaway is working on a house by the San Bernadino depot, Stan is working on a tower for San Bernadino and the lighting in Cajon. Track work in Summit is on hold waiting supplies. Stan is also working on lighting his Super Chief passenger cars for our rolling stock.

Joint Line: Work on the Rock Island interchange is almost complete. A wiring problem has been corrected. Ray Welliver and Ben Curll are installing the turntable in Denver.

N Scale: Dwight reported that all of the connecting tracks for the modules have now been standardized using Atlas snap track. Work has begun on the new yard that will occupy two modules.

Train Show

Table Sales: Table sales for the Train Show are well ahead of schedule with \$680 having been received to date. We still need a "big draw" for the show. Peter is talking with the Sarasota club about their HO modular layout. Alex Halberda has suggested a raffle with dinner train tickets or possibly auto train tickets.

Layout Raffle: We now have two layouts that have been donated: one N scale and one HO. The question was whether we wanted to have two raffles or what other possibilities existed. After considerable discussion, Ray Welliver moved, seconded by Stan Seeds, that we raffle off the N scale layout and then hold a silent auction for the HO scale layout. Motion passed unanimously.

Achievement Program

George Nink was presented with his "Scenery" certificate. Congratulation George.



New Business

August Meeting

There will be no regular meeting in August. A Western Division meet is scheduled for August 11, in Plant City. All members are urged to attend this meet. It is a one-day session

starting at 9:30 am till 3:30 pm. Cost is \$10. There will be clinics, layout tours, and model contests.

August Newsletter

There will be no August Newsletter due to the editor being out of town.

Sunshine Region

Stan reported that Prototype Rail Modeling is seeking recognition as a Special Interest Group by NMRA. They would then seek to have their meets sanctioned by National.

There is some concern about this in view of the failure of Prototype Rails to acknowledge the Sunshine Region at their meet last January. Stan will keep us informed.

Thursday Evening Sessions

There have been mixed results to our opening on Thursday evenings. The first night there were 8-10 people. It has since dropped off with people out of town. Ray Welliver, Darrin Kerwin, and Luther Ward have been consistent attendees.

Two Adults when Students Present

Just a reminder that any time we have students present, there must be at least two adults present.

Missing Locomotive

Ray Welliver is missing a Bangor & Aroostock GP7. If you have seen it or know where it is please contact Ray.

Club Shirts

Gordon Roedding has donated four club shirts to the club. He has been dieting and they are much too big for him now. They are 2X and in new condition. If you would like one, make a nice donation to the club donation box. New the shirts cost \$28.

Fast Clock

There have been a couple of problems with the new fast clocks. Don Sprotbery is working to correct the problem.

Need Something for your Home Layout?

Stan places orders periodically with Youngwood and gets a very good price. If you need something, let Stan know and he can order it for you in combination with a Club order, reducing the shipping costs per item.

Meeting adjourned at 2:30 PM

Respectfully submitted:

Dwight Sedgwick

Substitute Secretary

Sources

Every once in a while someone asks about hobby shops or other sources of model railroading supplies, material, models, etc. The following information is as current as the date of publishing of this newsletter:

Local hobby shops

Hobby Warehouse, S. Ft. Myers in strip mall behind Kinko's on Rt. 41. Good supply of paints, glues, wood, some styrene. Very limited model rr, mostly r/c car, boat and plane stuff.

Gold Coast Hobbies, Clark Road, Sarasota.

Full service model rr hobby shop with good selection of materials. Will give 10% discount to Scale Rails members.

Rich's at the Fleamasters Flea Market. Lots of model rr stuff, including kits, rolling stock and locos. Some in boxes under tables. Ask if you don't see what your looking for. Will give Scale Rails members 10% discount.

Internet suppliers

Youngwood Model Railroad Supply. This is the main supplier for our club. You get substantial reductions off MSRP from the Walthers catalogue of up to 34% for some manufactures. \$25 minimum order. Shipping is reasonable. If you tell Stan the specific items you want, with Walthers part number and price, he can include in one of the Club orders, thereby reducing the shipping costs to your and all. You may have to wait a while for Stan to put together an order. Pay Pal, VISA, etc. <http://www.ywdmodeltrains.com/>

Internet Model Trains is a good source for some things. For example, you can get 30 AWG stranded 'super-flexible' Miniatronics wire, for \$5.65 in 10 foot lengths. Some use this to solder a flexible electrical connection to the turnout's point hinge, rather than relying on the rail joiner. They also offer a spool of 100 feet of 18 AWG stranded wire for \$8.08 to \$9.09, depending on the wire color. This is good for drops from rails. Valley Model Trains is a great site for window shopping. You can find pictures of auto, truck, and structure kits here from a very large collection of manufactures. Once you find something that fits the bill, see if you can get it elsewhere for a better price (like Youngwood). However, they stock what they show and delivery is pretty fast. A good site. <http://valleymodeltrains.com/website/index.html>

Mining the Internet

The Internet offers a tremendous resource for model railroaders. Here are some examples that you might find of interest:

The Ad*Access Project

<http://scriptorium.lib.duke.edu/adaccess/>

The Ad*Access Project, funded by the Duke Endowment "Library 2000" Fund, presents images and database information for over 7,000 advertisements printed in U.S. and Canadian newspapers and magazines between 1911 and 1955. Ad*Access concentrates on five main subject areas: Radio, Television, Transportation, Beauty and Hygiene, and World War II, providing a coherent view of a number of major campaigns and companies through images preserved in one particular advertising collection available at Duke University. The advertisements are from the [J. Walter Thompson Company](#) Competitive Advertisements Collection of the [John W. Hartman Center for Sales, Advertising, and](#)

[Marketing History](#) in Duke University's [Rare Book, Manuscript, and Special Collections Library](#).

CultTVman's SF Modeling Trade Secrets

www.culttvman.com/tradesecrets.html

There are many examples of sites that offer information, tips and techniques that have nothing to do with model railroading but are non-the-less applicable to what we do. This is a good example as it is a site which focuses on Sci-Fi modeling. Check it out, you might learn something.

da Trains! - Railroad Data

<http://www.urbaneagle.com/data/>

This site gives you links to a very large list of data of interest or value to model railroaders. For example there is a link to conversion charts for all scales of the Plastruct line of shapes like I-Beams and H-Columns, round and rectangular rods and tubing. Z to #1 scales; and one for AAR reporting marks; and a diesel chronology listing diesel units by their date of manufacture, to help see what ran with what.

The Pacific Southwest Railway Museum

<http://psrm.org/faqs/>

This is a list of prototype facts that most will find interesting at least, and maybe helpful in your modeling efforts. Check it out.

Shirts

If you want a Club shirt, contact the Club Shirt Lady, Dianne Korf. Shirts are about \$28 each. Let her know your size and she will order them for you. You can contact her at (239) 281-8636 or by email at dkorf@msn.com

Scale Rails of Southwest Florida

Our Charter

Our intent and purpose is to promote and encourage the art of model railroading and preserve the history, science and technology of rail transportation. To this end we have organized our efforts for charitable, educational, literary and scientific purposes. As part of our endeavors, we host railroad displays, give talks and presentations for school, museums and various organizations. Our members do not presume to be experts, but rather a group of individuals sharing knowledge with each other.

Scale Rails of Southwest Florida

1262 Piney Road

N. Fort Myers, FL 33903

www.ScaleRails.org



Scale Rails of SW FL
1262 Piney Road
N. Ft. Myers, FL 33903

REMINDERS

Sept 8, Monthly meeting, 1:30pm

Oct 13, Monthly meeting, 1:30pm

Oct 19, SSR BOD meet, Scale Rails Depot, 3:30 pm

Oct 20, Western Division meet, 8:30 am, North Shore Alliance Church, and then to Scale Rails Depot after lunch.

EDITORIAL

The Scale Rails Depot is in need of a thorough cleaning. We need to put stuff away and clean-up the layouts. We need to throw away trash and accumulated 'stuff' with no redeeming value. We need to strip the re-surface the tile floor. The bathroom can stand to be polished. The outside of the building also is in need of attention. To do all that we need everyone to help. Before we know it the Western Division meet and the Train Show open house will be upon us. So let's get busy!

Keep having fun!
PETER GROSS, Editor